

Pan, Pump and Clotilde

An emotionally educative cartoon
for kids







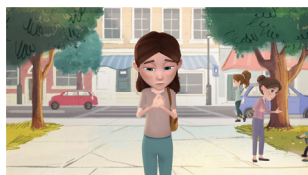
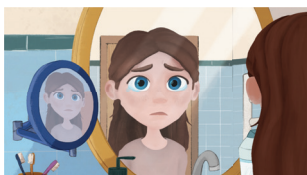
FINALLY!



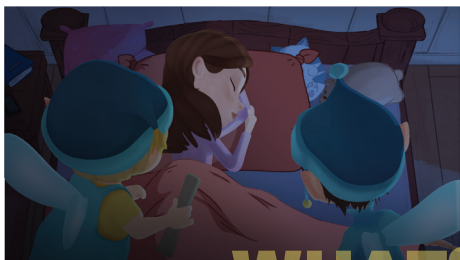
Popular child characters from another planet team up with a wise little girl from Earth... and just like that, self-development takes place—without the little viewer even realizing it.



An emotionally educative cartoon for kids?



A story series where each episode explores an important problem children face, told through adventurous tales—offering playful yet meaningful solutions. Using techniques from psychotherapy, the stories blend issues like sadness, tears, and emotional release with funny adventures and heartfelt resolutions.



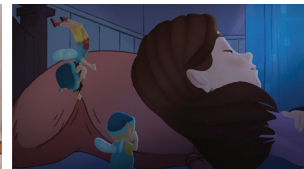
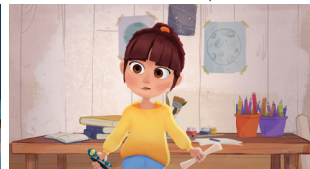
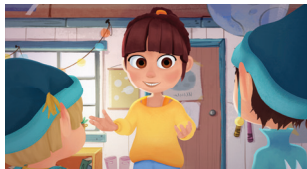
Two elves from the planet of the winged elves, sent to Earth to cure childhood sorrows...

WHAT?

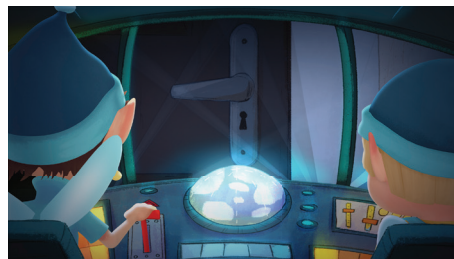
SURE... ANYTHING ELSE?



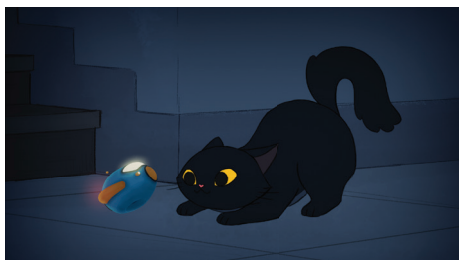
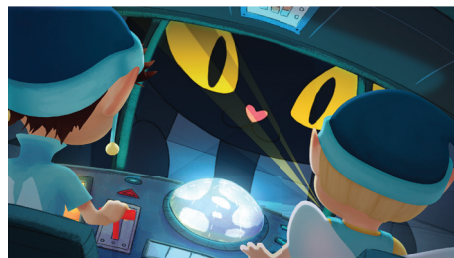
The elves land in the garden of Clotilde, a very smart girl from Earth whose wisdom often surpasses that of adults. Together, they write healing dreams for sad children who can't solve their problems on their own.



The dreams they write are placed under the children's pillows at night—and by the morning, the problem is magically transformed into a solution. But those dreams must first be written, right?



Adventures, Adventures,



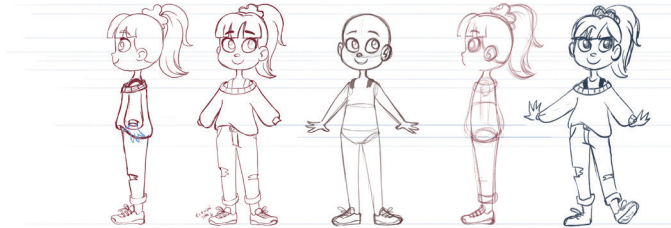
Only... the dreams They place healing dreams under kids' pillows must reach the children's homes somehow... This leads to thrilling adventures in every episode—each one filled with heart-pounding obstacles: sometimes a cat, sometimes the police, or a sleepwalking grandpa gets in the way, giving our little heroes quite the challenge.

Adventures...

CHARACTERS

Clotilde – The Little Therapist

A passionate explorer of the universe's secrets, wise and witty. Though children her age find her odd, her heart is full of love and kindness. By the end of the series, she finds a way to connect with her classmates.



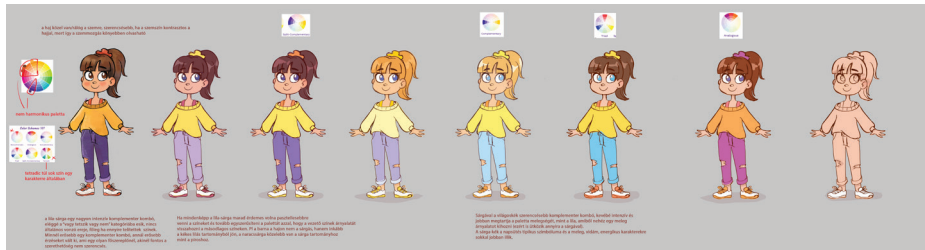
Pump – The Mischief Maker

A winged elf with restless energy, always plotting mischief. His cynical remarks hide his emotions, but by the end, he embraces his feelings and genuinely enjoys helping others.



Pan – The Lovable Goof

A sweet, chubby little elf, well-meaning, sensitive, and naive.
Why was he exiled too? Because he always followed Pump into mischief.
By the end of the series, he becomes more independent, self-aware, and brave.



TOOLS

THE CLAIRVOYANT

Sorrow Detector

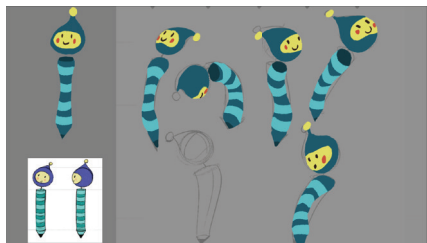
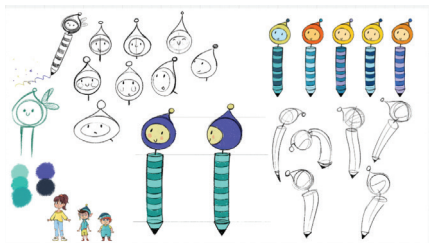
Detects children on Earth who are experiencing emotional pain



THE EMPATH-INK

Ronnie

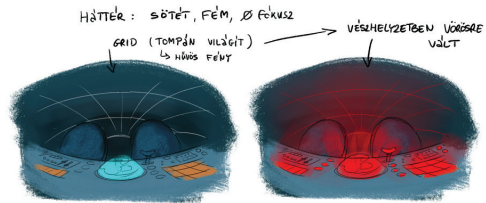
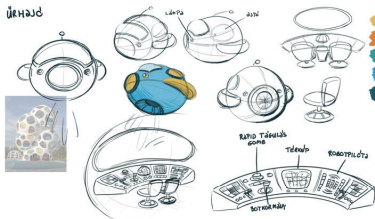
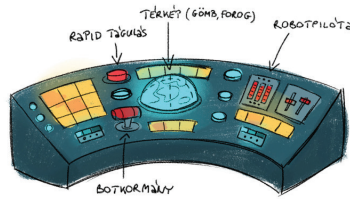
The self-writing pen for writing dreams



NIGHT DRIFTER

Travel Capsule

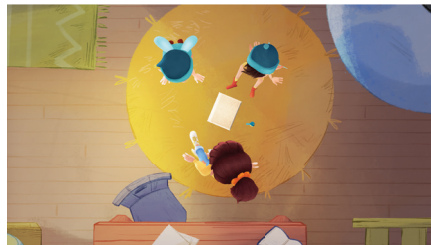
A size-changing travel capsule
the elves travel with



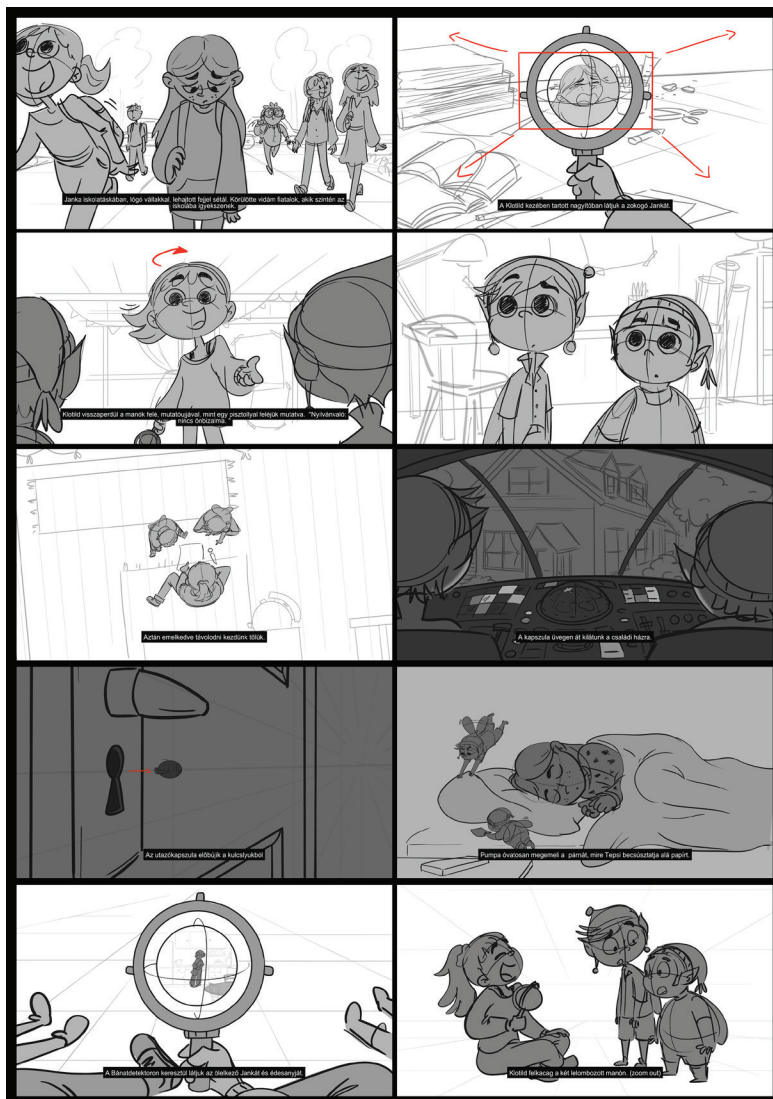
The Magical Sleepnote

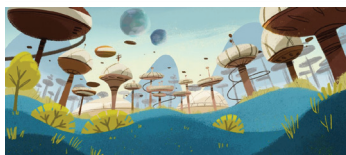
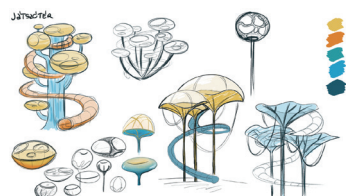
Invisible Ink Paper

The paper on which dreams are written



STORYBOARD







Ágnes Endrei-Tóth

Author

was inspired by two decades of therapeutic experience to help children through stories embedded in tales and imagery.

“Pan, Pump and Clotilde”

was born from a passion for blending entertainment with emotional growth. I wanted to create a series where children, through magical adventures, unconsciously learn empathy, resilience, and problem-solving.

Using real psychological techniques hidden inside fantastical healing dreams, we help kids experience powerful emotional tools without feeling “treated” or “lectured.” Pan’s and Pump’s funny struggles mirror the real challenges of understanding emotions, while Clotilde’s wisdom gently leads them—and young viewers—toward healing.

I believe storytelling has the power to imprint lessons that surface later in life when needed most. With this series, my goal is to bring smiles, imagination, and emotional support to children’s everyday lives, opening the door to a more resilient and emotionally intelligent generation.”

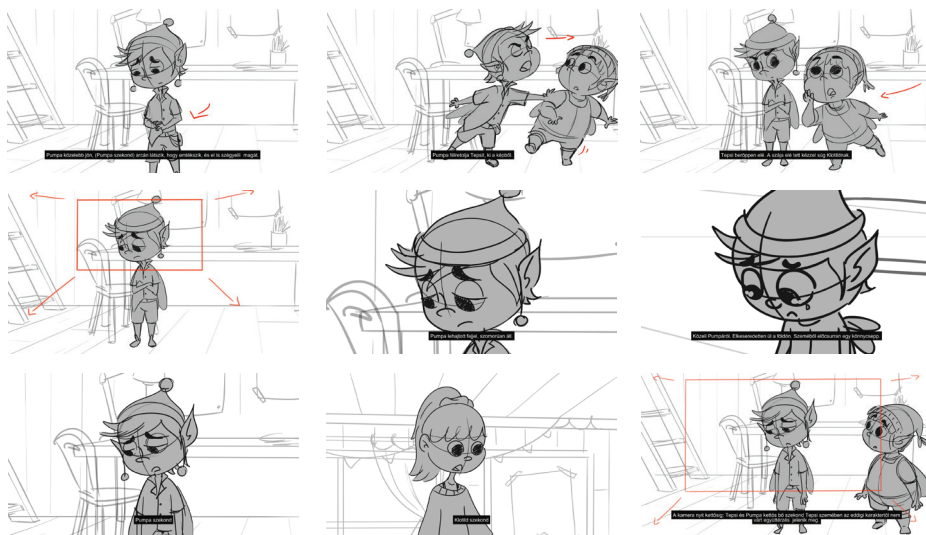
– Ágnes

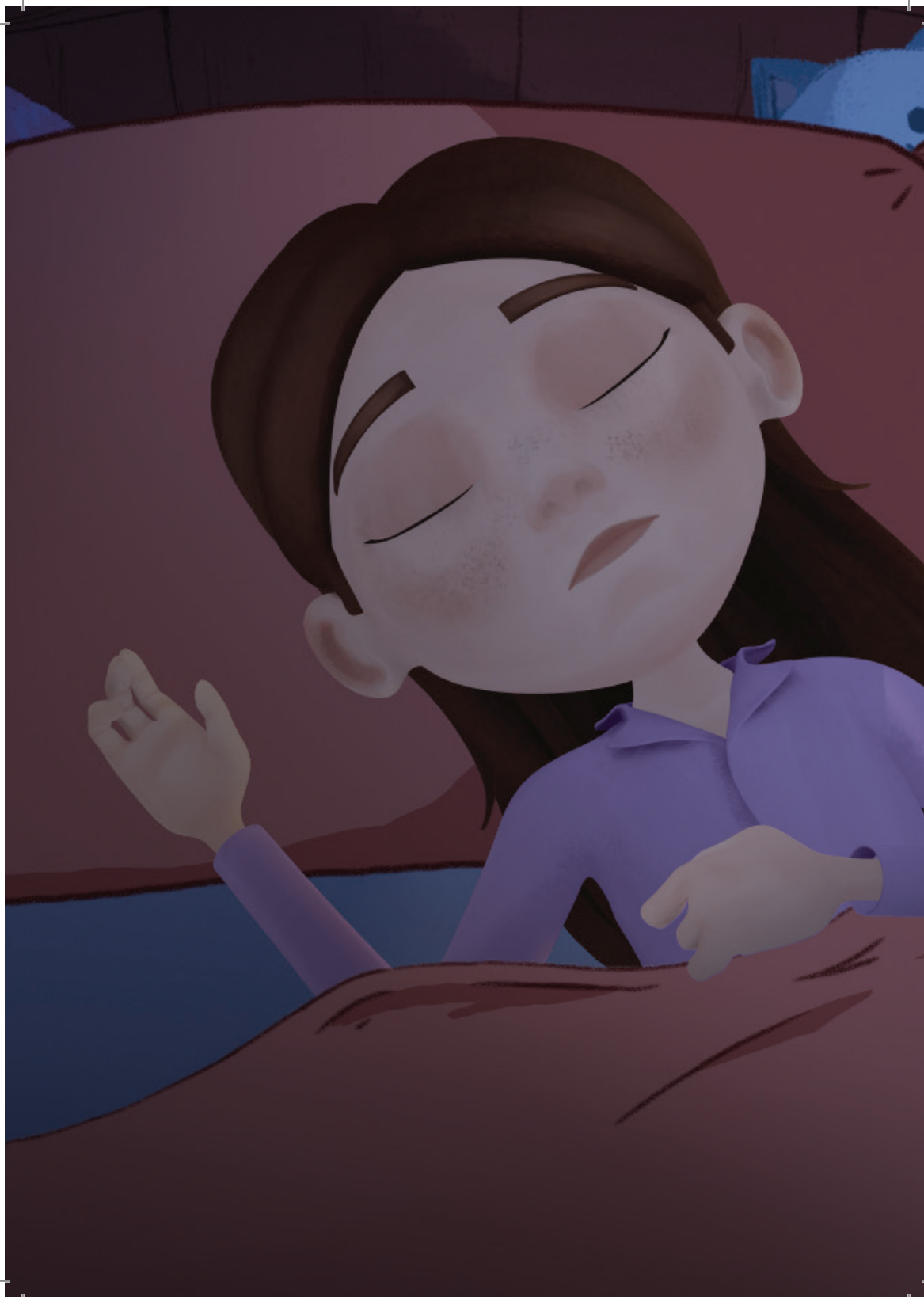


Péter Szeiler

Director

with many years of experience as a director and educator,
and numerous successful animated productions for children behind him,
supports Ágnes in her work as a director.







Target Audience: 6-10
Length: 13x15 min
Technique: 2D/3D animation
Status: in production
Author: Ágnes Endrei-Tóth
Director: Péter Szeiler
Production Company: Derengő

derengő

The story doesn't end here...
it's only just beginning!



www.panpumpandclotilde.com

www.derengo.com